



University of Kentucky
College of Agriculture,
Food and Environment
Cooperative Extension Service

Cooperative Extension Service

Adair County
409 Fairground Street
P.O. Box 309
Columbia KY 42728
Phone: 270-384-2317
Fax: 270-384-9167
<http://adair.ca.uky.edu>

AGRICULTURE & NATURAL RESOURCES

AUGUST 2018



2018 CAIP Cost-Share
(County Agricultural Investment Program)
Applications available:
August 6 – August 24, 2018
Adair County Extension Office
409 Fairground Street
Columbia KY

The Kentucky Agricultural Development Board recently approved \$151,000 in Agricultural Development Funds for the 2018 Adair County CAIP program (**County Agricultural Investment Program**) to be administered by the Adair County Cattlemen's Association.

This program is a 50% cost-share program with a maximum funding of \$1,500 per farm operation. CAIP is designed to provide farmers with incentives to allow them to improve and diversify their current production practices.

Producers who received funds in the 2017 CAIP program for Adair County are ineligible to receive funds for the 2018 CAIP based on the "Every Other Year" policy established by the county.

Applications for the program will be available August 6 – August 24, 2018 at the County Extension Office.
For more information call 270-384-2317.

2018 YAIP Cost-Share
(Youth Agricultural Incentives Program)
Applications available:
August 6 – August 24, 2018
Adair County Extension Office
409 Fairground Street
Columbia KY

The Kentucky Agricultural Development Board recently approved \$26,250 in Agricultural Development Funds for the 2018 Adair County YAIP program (**Youth Agricultural Incentives Program**) to be administered by the Adair County Cattlemen's Association.

The Youth Agricultural Incentives Program was established to facilitate a growing need for a specialized program that would benefit youth actively engaged in agriculture. The focus of the program will be on youth developing agriculture projects, as well as strengthening partnerships with school ag programs, Cooperative Extension, and 4-H/FFA organizations.

Applications for the program will be available August 6 – August 24, 2018 at the County Extension Office.

Cooperative Extension Service
Agriculture and Natural Resources
Family and Consumer Sciences
4-H Youth Development
Community and Economic Development

Educational programs of Kentucky Cooperative Extension serve all people regardless of economic or social status and will not discriminate on the basis of race, color, ethnic origin, national origin, creed, religion, political belief, sex, sexual orientation, gender identity, gender expression, pregnancy, marital status, genetic information, age, veteran status, or physical or mental disability. University of Kentucky, Kentucky State University, U.S. Department of Agriculture, and Kentucky Counties, Cooperating.
LEXINGTON, KY 40546



Disabilities
accommodated
with prior notification.

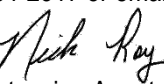
PARTICIPATION IN CAIP

The (County Agriculture Investment Program) requires a minimum of one (1) educational component related to farm management, production, best management practices or marketing. Examples of types of sessions include workshops, seminars, field days, university sanctioned on-line courses, webinars, etc.

NOTE: Educational Requirement for CAIP is extension sanctioned and a County Extension Agent must sign off on the education certification form.

The Cooperative Extension Service continuously provides educational meetings that fulfill the CAIP educational requirement. Be sure to watch the local newspapers for meeting advertisements, listen the local radio stations for announcements, and pay close attention to the digital sign at the Extension Office for up-to-date announcements of all meetings. As always, you can call the County Extension Office at 270-384-2317 and inquire of educational meetings.

For information on any of the educational programs, call the Adair County Extension Office at 270-384-2317 or email nick.roy@uky.edu

Nick Roy 
County Extension Agent
For Agriculture & Natural Resources

Kentucky State Fair

August 16-26, 2018

Louisville KY

Rinse & Return Program

August 28, 2018

9:00 am – 11:00 am

Adair County Extension Office
409 Fairground Street in Columbia

The Rinse and Return Program is a voluntary, cooperative program provided by the Adair County Cooperative Extension Service and Kentucky Department of Agriculture.

This program allows for the proper recycling of pesticide containers. This reduces the amount of material entering the landfill or being disposed of by other means. Some of the end products include drainage pipe, highway sign posts, underground utility conduit, and wire/cable spool flanges.

To participate, containers should be triple rinsed, labels and lid removed, and brought to the Extension Office between the hours of 9:00 am and 11:00 am on August 28th. For more information, contact the Extension Office at 270-384-2317.

Educational programs of Kentucky Cooperative Extension serve all people regardless of economic or social status and will not discriminate on the basis of race, color, ethnic origin, national origin, creed, religion, political belief, sex, sexual orientation, gender identity, gender expression, pregnancy, marital status, genetic information, age, veteran status, or physical or mental disability. To initiate a complaint, contact Tim West in the Business Office at 859-257-3879. At the University level, Terry Allen and Patty Bender in the UK Office of Institutional Equity and Equal Opportunity (859-257-8927) may be contacted. Additionally, employee or clientele complaints involving any research or extension sponsored program or activity may be directed to the USDA, Director Office of Civil Rights, Room 326-W Whitten Bldg., 14th & Independence Ave. SW, Washington DC 20250-9410 (202-720-5964).

The Adair County Farmer's Market is ongoing.
 Tuesday & Fridays
 6:00 am – 10:00 am
 Adair County Extension Office Parking Lot








Farmers Market Squash Sauté

2 cups whole grain rotini pasta	2 medium yellow squash, diced
3 boneless chicken breasts	2 garlic cloves, minced
1 tablespoon olive oil	2 tablespoons fresh chopped basil
2 medium zucchini, diced	¼ cup light Alfredo sauce
4 medium carrots, peeled and diced	2 tablespoons shredded Parmesan cheese

Cook pasta according to package directions. **Roast** chicken breasts at 400 degrees F to an internal temperature of 165 degrees F, about 25-35 minutes. **Dice** chicken into bite sized pieces. In a large sauté pan, **add** olive oil, zucchini and carrots. **Sauté** until slightly cooked. **Add** yellow squash and garlic and **sauté** until all vegetables are tender. **Remove** from heat and **stir** in basil, diced chicken and pasta. **Add** Alfredo sauce and **toss** until ingredients are evenly coated. **Reheat** by **tossing** the ingredients in the sauté pan for 3-5 minutes over medium heat. **Sprinkle** with Parmesan cheese and **serve**.

Yield: 8, 1 cup servings

Nutritional Analysis: 230 calories, 7 g fat, 2.5 g saturated fat, 40 mg cholesterol, 210 mg sodium, 27 g carbohydrate, 4 g sugars, 18 g protein.

Creamy Cucumber and Chicken Salad

½ pound chicken breast	½ teaspoon sea salt
1 tablespoon fresh lemon juice	1 tablespoon ground black pepper
1 cup slivered almonds	2 tablespoons fresh chopped dill
½ cup nonfat plain Greek yogurt	2 medium cucumbers, chopped
3 ounces reduced fat cream cheese	1 cup dried cranberries
2 tablespoons Dijon mustard	8 lettuce leaves

Marinate chicken breast in lemon juice for one hour. **Remove** chicken from marinade and **chop** into bite sized pieces. **Sauté** in preheated non-stick skillet until thoroughly cooked and no longer pink in the center. **Set aside** to cool. **Toast** slivered almonds on low heat in a non-stick skillet until fragrant. **Set aside** to cool. In a large mixing bowl **combine** yogurt, cream cheese, mustard, salt, pepper and dill. **Add** chicken and **toss**. **Add** cucumbers, cranberries and almonds to chicken mixture. **Toss** to coat. **Cover and chill** in refrigerator for 1 hour. **Spoon** salad into washed and dried lettuce leaves. **Serve** cold.

Yield: 8 servings

Nutritional Analysis: 210 calories, 10 g fat, 2 g saturated fat, 30 mg cholesterol, 290 mg sodium, 19 g carbohydrate, 3 g fiber, 14 g sugars, 12 g protein.

“Seed Tick / Turkey Mite”

Season Underway

Lee Townsend, UK Entomologist

Tiny lone star tick larvae (also called “seed ticks” or “turkey mites”) are active now. Hundreds recently emerged from egg masses deposited by females climbing vegetation to await passing hosts. Reaction to multiple bites cause painful itching that can last about 3 weeks. Dressing appropriately, using repellents, and checking regularly for ticks are important actions to take to reduce the chances for ticks attaching and feeding on you during the remainder of the tick season.

Ticks seeking blood meals work from the ground up. They will climb on vegetation and wait for a passing host, so most are picked up on the lower legs of those passing by. Anyone unfortunate enough to walk through or stand in an area where a mass of lone star tick eggs has hatched may find themselves covered with hundreds of the tiny parasites that attach and feed for about 2 days (Figure 1).

Protecting Yourself from “Seed Ticks”

Create a Clothing Barrier

- Wear long pants and tuck the bottoms into socks. This helps to keep ticks on the outer surface of your clothing and off your skin.
- Wear light colors so ticks are more visible.

Apply Repellents

- Clothing sprays containing permethrin (for example Sawyer Premium Insect Repellent for Clothing & Gear and Permanone) can be used when in areas ticks are known to be abundant or if the risk is unknown. These products are not for application to skin.
- Deet-based repellents with a concentration of at least 20% can provide good protection.
- Picaridin and botanical or herbal repellents are unlikely to provide much protection against ticks.

Check for Ticks

- Check yourself thoroughly for ticks and carefully remove them.

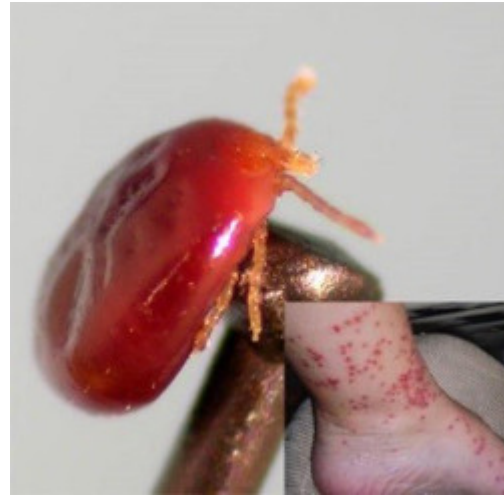


Figure 1. Tiny 6-legged lone star tick larvae on stick pin. (Photo: Lee Townsend, UK). Inset shows reaction to bites. (Photographer unknown).



Figure 2. Tiny spots are lone star tick larvae. Pieces of duct tape provide an efficient way to “blot up” tick larvae before they disperse and attach. (Photo: L. Minter)

Kentucky Beef Cattle Market Update

Dr. Kenny Burdine, Livestock Marketing

Specialist, University of Kentucky

As I write this article (July 11, 2018), international trade seems to be the topic of discussion most everywhere I turn. Many people want to know the likely impact of tariffs that have been, or may soon be, imposed on US beef. So, I thought it might be worth a quick dive into the topic to put some of the discussion into perspective.

We will start with the basics and keep it pretty simple. A tariff is a tax on imports that is imposed by the importing country. We can discuss the United States and Canada, since that is the most recent example. Canada has imposed a tariff on imported beef from the US. Due to the tariff, the price of US beef increases in Canada. Because the price rises, less US beef is imported by Canada, which means that more beef will be on the US market. And, because more beef is left on the US market, beef prices in the US will decrease.

However, the picture becomes less clear when one starts to think about the potential magnitude of this price impact and this is where I want to spend some time looking at the numbers. Like many agricultural sectors, exports have a major impact on the US beef market. As can be seen at the bottom of table 1, the US exported nearly 11% of its beef production in 2017. While this is definitely significant, the beef sector is actually less export-dependent than pork or poultry, which export 22% and 16%, respectively.

Then, as we start thinking about impacts from tariffs imposed by specific countries, we also need to think about how much beef actually flows to that specific country.

Table 1 shows US beef exports to our largest five export destinations (Japan, South Korea, Mexico, Hong Kong, and Canada) for 2017. Note that Japan is the largest importer of US beef, accounting for 28.9% of our total exports. However, because most US beef is consumed domestically, this still only represents a little over 3% of our total production.

Again, we will consider the recent Canadian tariff on US beef. As can be seen in table 1, over 300 million lbs of beef were exported to Canada in 2017. However, this only represented 1.2% of total US beef production. So, even if exports to Canada decreased by 25%, which would be a very large response, domestic supply would only increase by about 0.3%. Similarly, there has also been a lot of discussion about China recently, but China remains a very small importer of US beef at this time. Hopefully, table 1 provides some perspective on how dependent the US beef sector is on specific export markets.

Since our export markets are pretty diverse, the direct impact of tariffs imposed on US beef by any specific trading partner are not likely to have a large impact on the cattle market. Still, the culmination of tariffs by multiple trading partners does have more potential to impact prices. At the same time, tariffs on other meat products also have the potential to impact beef markets. China and Mexico both have levied tariffs on US pork, which will negatively impact US pork prices. Due to the substitution effect, beef prices will be negatively impacted as pork becomes a relatively cheaper source of protein.

Table 1. 2017 US Beef Exports to Selected Countries

Source: USDA-ERS, Livestock Marketing Information Center, Author Calculations

	Exports, Carcass wt equivalent (1,000 lbs)	As % of US Beef Exports	As % of US Beef Production
Japan	826,004	28.9%	3.2%
South Korea	472,729	16.5%	1.8%
Mexico	419,349	14.7%	1.6%
Hong Kong	335,705	11.7%	1.3%
Canada	309,138	10.8%	1.2%
Total Exports (includes others)	2,859,687		10.92%

ROUND II



University of Kentucky
College of Agriculture,
Food and Environment
Cooperative Extension Service

ADAIR COUNTY



PROGRAM

The Adair County Young Farmer program is a collaborative effort between the Adair County Cooperative Extension Service and sponsoring agencies to provide young farmers education on farm management and to develop leadership skills to prepare the next generation of agriculture leaders in our community.....

Dates of Sessions to be announced.

Session I– October 2018

Introduction and Setting Farm Goals

Session II - November 2018

Resources for Farmers.

Overview of supporting agencies & organizations.

Session III - December 2018

Business & Tax Management

Session IV - January 2019

Soil Science & Agronomy

Session V - February 2019

Field Trip - KY Young Farmer Leadership Conference

Session VI - March 2019

Livestock Management

**All meetings will begin at 6:30 pm CT
at the Adair County Cooperative Extension Service.
Refreshments provided.*

The first Young Farmer program was held eight years ago. Past participants have gone on to serve in many leadership roles...i.e. Adair County Cattlemen's Association, Kentucky Farm Bureau, UK Cooperative Extension Service, USDA programs, etc.

For more information contact:

Nick Roy
County Extension Agent
for Agriculture & Natural Resources
(270) 384-2317
nick.roy@uky.edu

Would you like to be a business sponsor of the Adair County Young Farmer Program?
Contact Nick Roy @ the Extension Office @ 270-384-2317

Cooperative Extension Service
Agriculture and Natural Resources
Family and Consumer Sciences
4-H Youth Development
Community and Economic Development

Educational programs of Kentucky Cooperative Extension serve all people regardless of economic or social status and will not discriminate on the basis of race, color, ethnic origin, national origin, creed, religion, political belief, sex, sexual orientation, gender identity, gender expression, pregnancy, marital status, genetic information, age, veteran status, or physical or mental disability. University of Kentucky, Kentucky State University, U.S. Department of Agriculture, and Kentucky Counties, Cooperating.
LEXINGTON, KY 40546



Disabilities
accommodated
with prior notification.

MONEY FOR FARM IMPROVEMENTS AVAILABLE...

COUNTY AGRICULTURAL INVESTMENT PROGRAM (CAIP)



Adair County Extension Office

409 Fairground Street

P.O. Box 309

Columbia KY 42728

PHONE: 270-384-2317

FAX: 270-384-9167

Applications will be available for Adair County's CAIP to assist farmers in making important on-farm investments.

Application Period:

August 6 – August 24, 2018

No applications will be accepted after August 24th.

Application Availability:

Adair County Extension Office

Monday – Friday (8:00 am – 4:30 pm)

For More Information:

Call the Extension Office at 270-384-2317

All applications are scored, based on the scoring criteria set by the Kentucky Agricultural Development Board.

The Kentucky Agricultural Development Board approved \$151,000 in Agricultural Development Funds for the 2018 Adair County CAIP program (**County Agricultural Investment Program**) to be administered by the Adair County Cattlemen's Association. This program is a 50% cost-share program with a maximum funding of \$1,500 per farm operation. CAIP is designed to provide farmers with incentives to allow them to improve and diversify their current production practices.

For information contact the Adair County Extension Office at 270-384-2317 or stop by 409 Fairground Street in Columbia.

YOUTH AGRICULTURAL INCENTIVES PROGRAM

The Kentucky Agricultural Development Board recently approved \$26,250 in Ag Development Funds for an Adair County Youth Agricultural Incentives Program. The focus of the program is on youth developing agricultural projects, as well as strengthening partnerships with school ag programs, Cooperative Extension, and 4-H/FFA organizations. This is a cost-share program, and youth must be enrolled in elementary, middle or high school, or home school and be at least 9 years of age on January 1, 2018. Applications for the Youth Ag Incentives program will be available August 6 – August 24, 2018 at the Adair County Extension Office located at 409 Fairground Street in Columbia during regular business hours (Monday-Friday 8:00am-4:30pm). For information contact the Extension Office at 270-384-2317.

ADAIR COUNTY FEED CALF PROGRAM INCENTIVE

The Adair County Cattlemen's Association was recently approved for \$20,000 by the Governor's Office of Agriculture Policy and the Adair County Agriculture Development Council to conduct an incentive program. The program will provide farmers up to a \$400 incentive to enroll calves into the Adair County Feeder Calf program. The incentive will only be available for new participants in the program. Funds will be dispersed after calves have been marketed through the Adair County Feeder Calf Program at a rate of \$10 per head, maximum \$400 per farmer. Funds will be awarded on a first-come first-serve basis. Funds dispersed are to help farmers offset the cost of enrolling in the Adair County Feeder Calf Program.

Requirements for enrolling calves into the Adair County Feeder Calf program includes a series of health practices that help increase the likelihood of calf survival. Since the inception of the program in 2013, calves enrolled in the program have averaged \$25 to \$50 per head above market average. Just over 7,500 calves have been enrolled in the program since 2013.

Once the calves have met the requirements of the program, the calves will be certified and can be marketed at the location of the farmer's choice. Farmers are encouraged to work together and market like calves together to improve premiums.

Farmers who would like to participate in the program should contact the Adair County Cooperative Extension Service at (270) 384-2317 for more information prior to further working of calves to ensure the proper protocol is followed.